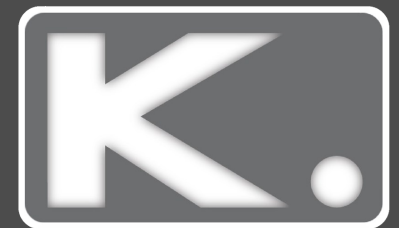




**2 Bed  
Apartment  
located in Hove**

**Guide Price £350,000**



# 42 Blenheim Court

Approximate Gross Internal Area = 64.3 sq m / 692 sq ft

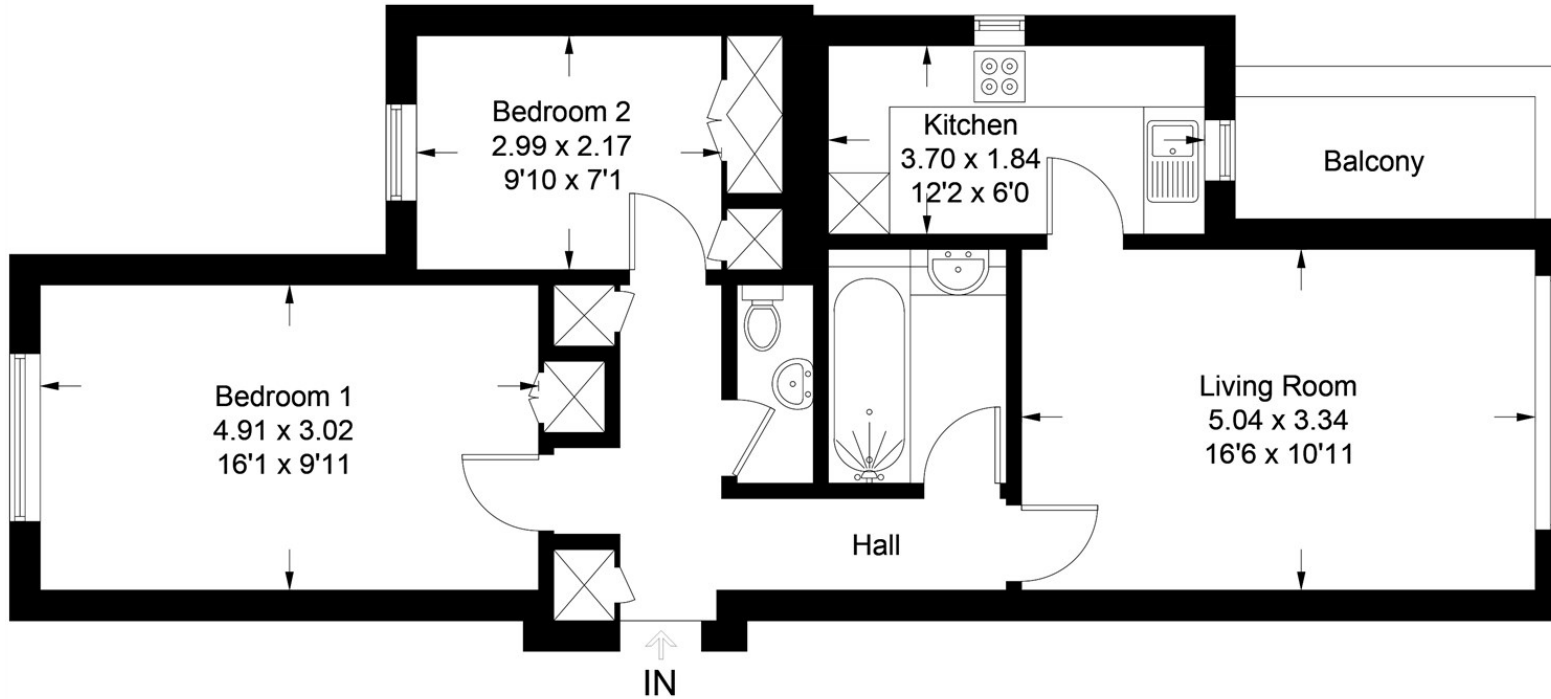


Illustration for identification purposes only, measurements are approximate, not to scale. floorplansUsketch.com © (ID691445)

## DIRECTIONS

## CONTACT

Kendrick Property Services - Brighton  
 45270 Lewes Road  
 Brighton  
 East Sussex  
 BN2 3HP

E: [sales@kendrickpropertyservices.co.uk](mailto:sales@kendrickpropertyservices.co.uk)  
 T: 01273 600162  
[www.kendrickpropertyservices.co.uk](http://www.kendrickpropertyservices.co.uk)

Energy Efficiency Rating		
	Current	Potential
Very energy efficient - lower running costs		
(92 plus) <b>A</b>		
(81-91) <b>B</b>		
(69-80) <b>C</b>		
(55-68) <b>D</b>		
(39-54) <b>E</b>		
(21-38) <b>F</b>		
(1-20) <b>G</b>		
Not energy efficient - higher running costs		
<b>England &amp; Wales</b>	EU Directive 2002/91/EC	

